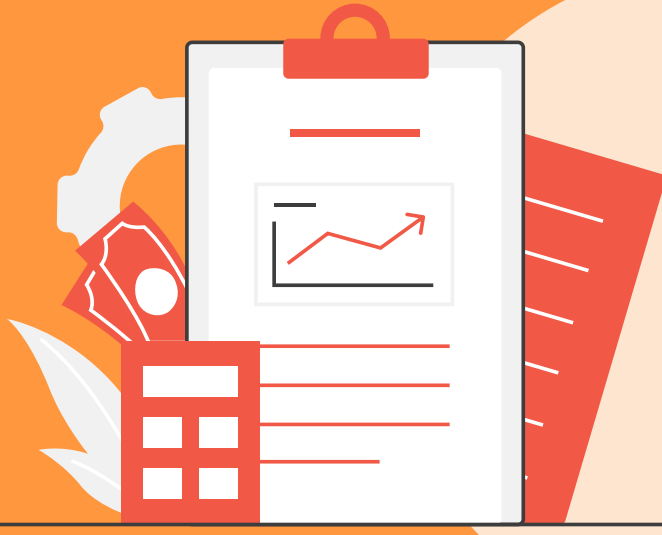
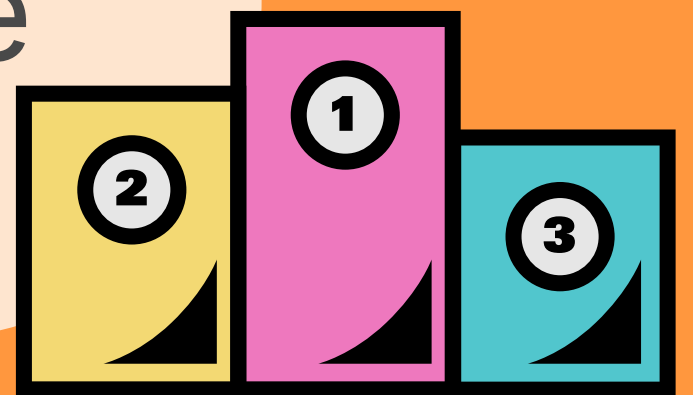


How to Become a Leadership Coach



Know your strengths and pick a niche that speaks to you

Ensure you're ready for the highly competitive corporate world

A collection of business-related icons including a gear, a clipboard with a line graph, a red folder, a calculator, and a pen.

Have an intensive understanding of the business environment

Gain knowledge of organisational procedures & leadership models


A large blue quote icon consisting of two quotation marks and a vertical line.

Exhibit client-expected attributes yourself and lead by example